

winalon

Ultimate GPS Tracking Platform

Minsk

+375 29 329 32 94
sales@gurtam.com

Dubai

+971 4 770 7601
office_dubai@gurtam.com

Boston

+1 617 963 35 89
office_boston@gurtam.com

Buenos Aires

+54 11 3221 8194
office_buenosaires@gurtam.com

Moscow

+7 499 918 31 86
office_moscow@gurtam.com

winalon

Ultimate GPS Tracking Platform

System Overview

The hardware-agnostic platform: we work with 1350+ types of equipment

Companies in 130+ countries choose Wialon to track 1,500,000 assets worldwide. You can instantly start using the system with almost any type of AVL hardware, personal, asset, satellite trackers, and various MDVRs. The universal platform goes beyond simple monitoring and allows you to launch tracking in remote areas with satellite communication option and benefit from sophisticated video monitoring solutions.

Wialon promotes advanced security, ensures precise location detection and total visibility into the performance of your assets through real-time monitoring, powerful analytics, alert and notification system allowing for early response to any emergencies.

Scope of application:

- ♦ Fleet performance analysis
- ♦ Mobile workforce management
- ♦ Driver behavior monitoring
- ♦ Fuel consumption control
- ♦ Video surveillance
- ♦ Real-time monitoring
- ♦ Tachography
- ♦ Hazardous/FMCG goods transportation control

System functionality:

- ♦ GPS/LBS location detection
- ♦ Alert and notification system
- ♦ In/out geofence control
- ♦ Fuel consumption/fillings/thefts reports
- ♦ CAN bus data reading
- ♦ Route optimization/management
- ♦ Flexible report-building tools
- ♦ Data capture from sensors, counters, RFID readers, etc.

Trusted by service providers and hardware manufacturers in various business domains



Fleet
management



Transport
and logistics



Delivery and
field services



Safety and
security



Waste
management



Utilities and
construction



Public
transportation



Personal
tracking



Video telematics: real-time and event-based video monitoring

The screenshot displays the Wialon Hosting web interface. The top navigation bar includes links for Monitor, Track, Messages, Reports, Geofences, Drivers, Trailers, Jobs, Notifications, Users, Units, Unit Groups, Tools, Apps, and a search bar. The main interface is divided into several sections:

- Unit Selection:** A dropdown menu shows 'KP1_TEST'. Below it are tabs for 'Today', 'Yesterday', 'Week', and 'Month'. The 'Interval' is set to 'Specified interval'. The 'From' and 'To' dates are '2016 June 17 18:21' and '2016 June 17 18:22' respectively. The 'Message type' is 'Data messages' and 'Show parameters as' is 'Raw data'. There are 'Clear' and 'Execute' buttons.
- Statistics:** A summary of data for the selected unit and time period:
 - Total messages: 138
 - Total time: 00:01:59
 - Distance: 1.50 km
 - Average speed: 45.40 km/h
 - Maximum speed: 84.00 km/h
- Message List:** A table showing a list of messages with columns for Time, Speed, and other details. The first few rows are:

Time	Speed	Other
2016-06-17 18:21:12	0	
2016-06-17 18:21:13	0	
2016-06-17 18:21:13	0	
2016-06-17 18:21:14	0	
2016-06-17 18:21:15	0	
2016-06-17 18:21:15	0	
2016-06-17 18:21:16	---	---
2016-06-17 18:21:16	0	53.9286383333, 27.5013616667, 206, Germany, Messe-Schnellweg, Mittelfeld 30519
2016-06-17 18:21:17	---	---
2016-06-17 18:21:17	0	53.9286383333, 27.5013616667, 206, Germany, Messe-Schnellweg, Mittelfeld 30519
2016-06-17 18:21:18	---	---
2016-06-17 18:21:18	0	53.9286383333, 27.5013616667, 206, Germany, Messe-Schnellweg, Mittelfeld 30519
- Map:** A map showing the location of the unit. A video player is overlaid on the map, showing a street view of a city street. The video player has a play button and a progress bar.
- Media:** A section on the right side of the interface showing a list of media files. The first few items are:
 - Messe-Schnellweg, Mittelfeld 30519
 - Messe-Schnellweg, Mittelfeld 30519
 - Messe-Schnellweg, Mittelfeld 30519
 - Messe-Schnellweg, Mittelfeld 30519

A 'New command' dialog box is open in the foreground. It contains the following fields:

- Command name: Download video online
- Command type: Download video for the last N seconds (download_last_n_se)
- Channel: Auto
- Phone number: Use any

Below these fields is a section titled 'Indicate access rights required for users to execute this command:' with a list of permissions:

- ☒ View item and its basic properties
- ☐ View detailed item properties
- ☐ Manage access to this item
- ☐ Delete item
- ☐ Rename item
- ☐ View custom fields
- ☐ Manage custom fields
- ☐ View admin fields
- ☐ Manage admin fields
- ☐ Edit not mentioned properties
- ☐ Change icon
- ☐ Query reports or messages
- ☐ Edit ACL propagated items
- ☐ Manage item log
- ☐ Edit connectivity settings (device type, UID, phone, access password, messages filter)
- ☐ Create, edit, and delete sensors

There is a checkbox for 'Without parameters' and a field for 'Interval in seconds (range 1-60):' with the value '30'. The dialog has 'Cancel' and 'OK' buttons.

Wialon brings together satellite monitoring and video surveillance in one platform

Feature-rich Wialon system, combined with MDVRs functionality, allows you to watch the assets and the events on the way with your own eyes.

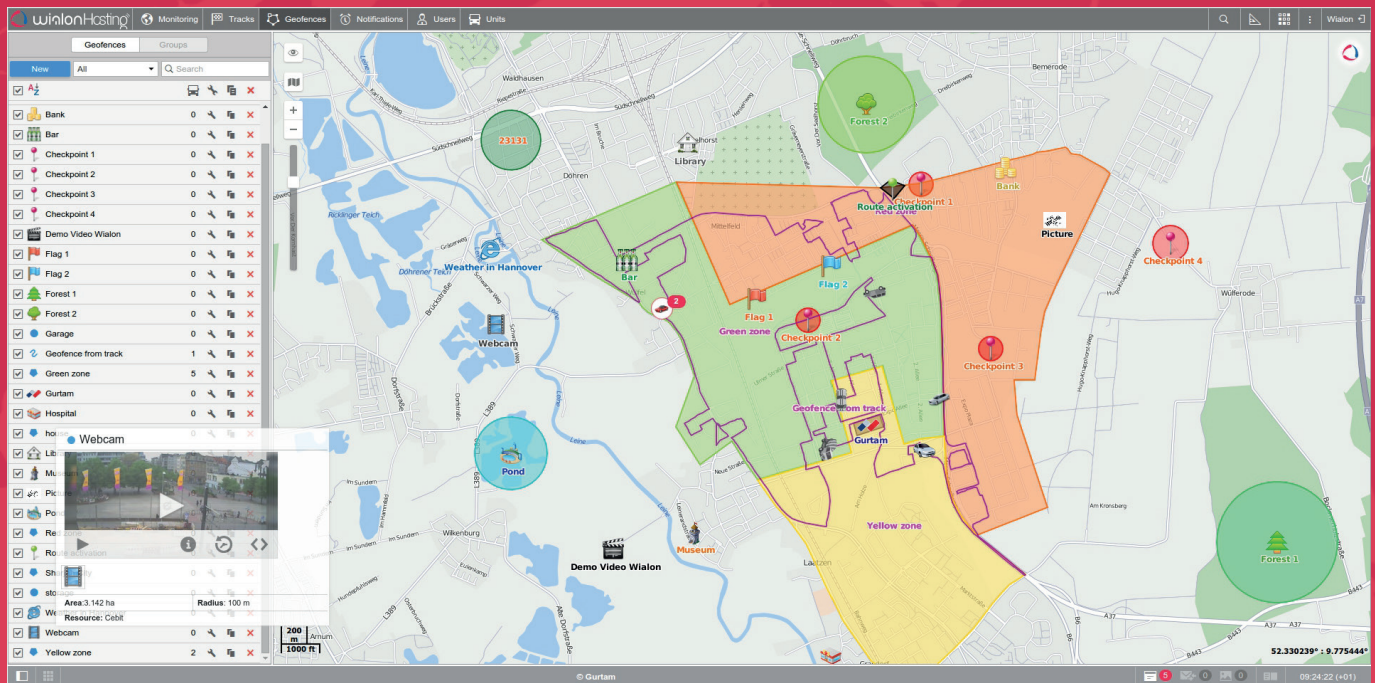
Accurate unbiased video records enable precise incident analysis which in the end leads to reduced accident rates, increased fuel economy, improved road safety, and enhanced smart insurance practices

Features:

- ♦ Receive photos and view videos from tracking devices
- ♦ Generate reports with event time, location, and video recordings
- ♦ Quickly assess current traffic situation
- ♦ Perform deeper driver behavior analysis
- ♦ Minimize traffic consumption with event-based video monitoring
- ♦ Bind video streaming to geofences



Geofences and notifications: control every aspect of unit performance in/outside the specified area



1.Geofences

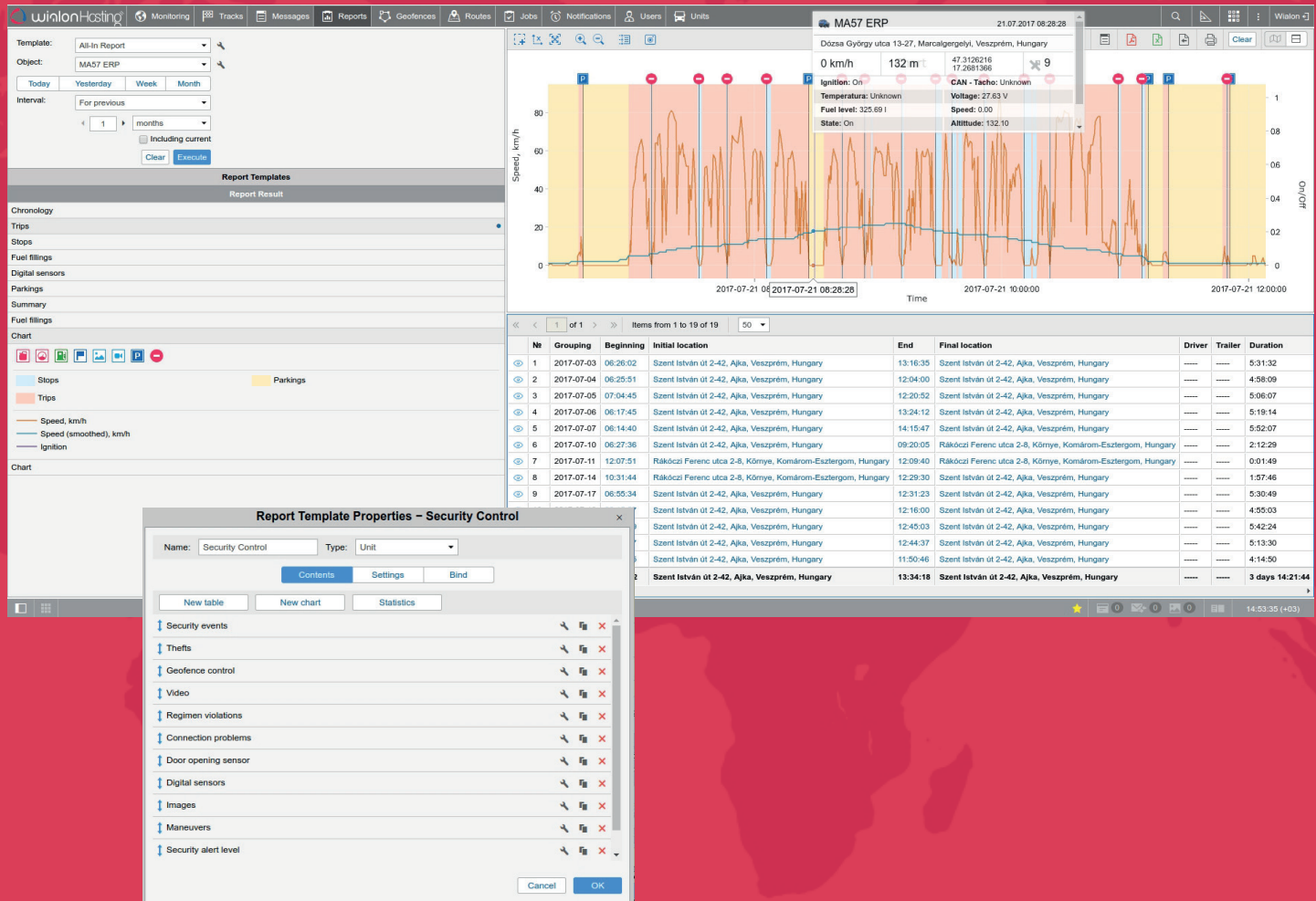
Create any number of geofences of various shapes, colors, and sizes to restrict unit movements, prevent vehicle thefts, and control its activities within a specified area.

- ♦ **Control** unit performance inside or outside geofences, including speed limit violations, sensor value variations, access to units
- ♦ **Use** geofences as addresses in reports and tooltips whenever precise address information is missing or control route performance by using geofences as checkpoints
- ♦ **Benefit** from dynamically updated images, screenshots, and other information bound to geofences
- ♦ **Be notified** on any events taking place within geofences

2.Notifications

Receive e-mail, SMS or pop-up notifications if a certain event occurs (e.g. violations, alarm button activation, sensor value variations, connection loss, idling, etc.). Notifications contain brief information on the event or can be used to trigger certain processes in the system, for instance, sending messages to a driver, executing a command, sending reports by e-mail.

Advanced reports: powerful analytics in Wialon



Reports are used to analyze and present information in handy tables and charts. The system allows creating flexible report templates, viewing reports in a browser, exporting them to files in various formats, and sending by e-mail.

- ♦ **Report queries**

Study reports online, get scheduled and event-based reports or execute them in one click from the monitoring panel.

- ♦ **Handy data management**

Use multi-level grouping, sorting, detalization mode, interval filtration, and time limitations for data display.

- ♦ **Informative charts**

Study charts with auto-scaling, zoom, single/multiple axes view, message points tracing; add backgrounds, event markers, and different line colors.

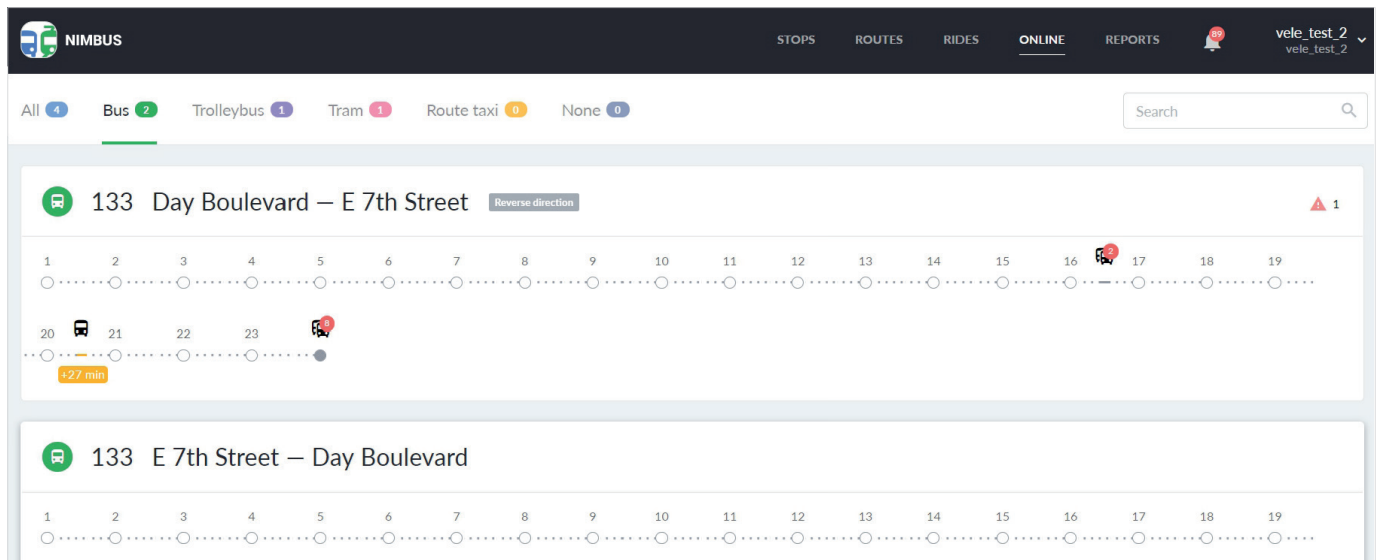
- ♦ **Mapping options**

Take advantage of a scalable map featuring event markers, geofences, units, and tracks with the option to attach it to a report.

- ♦ **Extended information**

Complement reports with precise addresses, statistics, and data on 300+ monitoring parameters.

NimBus: the new solution for public transportation companies



NimBus for fleet managers is designed to control vehicles on route. The service enables route planning and performance control, proper distribution of vehicles between rides and precise schedule management. The solution also ensures efficient real-time monitoring and detailed reports on fleet activity.

- ♦ User-friendly interface
- ♦ Locator tool for passengers
- ♦ Multi-level access rights system
- ♦ Dashboard page to overview the service
- ♦ Event-based notifications
- ♦ Handy timeline for online tracking
- ♦ API for third-party system integrations
- ♦ White labeling opportunities

Logistics: the advantageous order management service

The solution ensures effective order management and delivery process monitoring. It comprises a web-version for dispatchers and a mobile app for couriers.

Logistics web-version:

- ♦ Create or import orders with detailed description
- ♦ Select orders, vehicles and generate routes in a handy interface
- ♦ Get preliminary routes and data on the estimated arrival time and mileage
- ♦ Monitor and coordinate delivery process with notifications and bidirectional communication

Logistics mobile version:

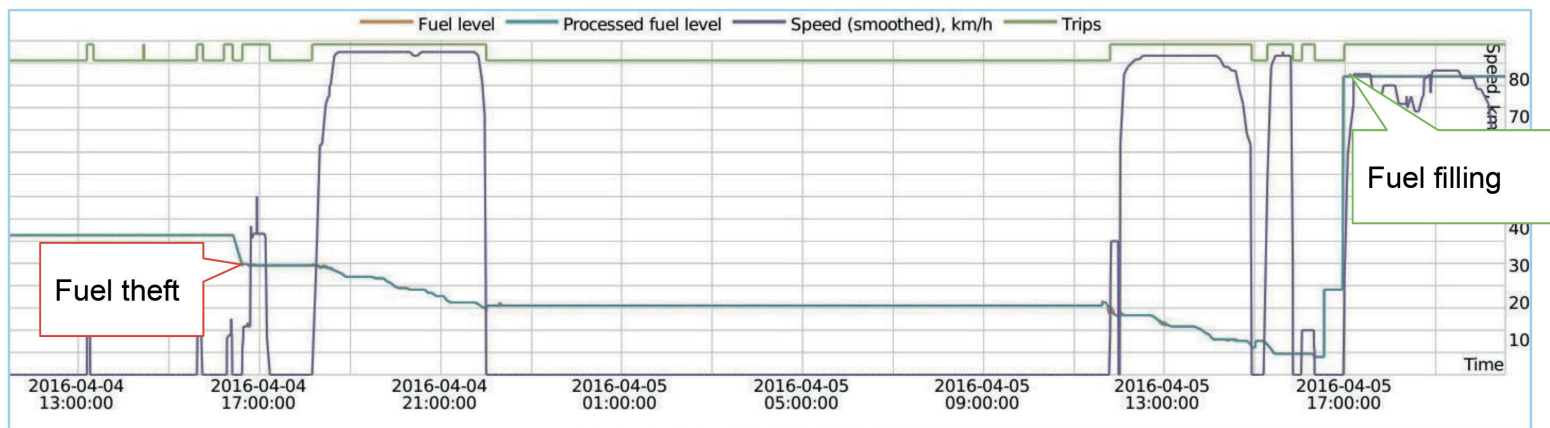
- ♦ View orders in the list and on the map
- ♦ Track and evaluate delivery progress
- ♦ Generate routes using external navigation apps
- ♦ Assign order statuses, add comments and photos
- ♦ Turn your smartphone into a tracker
- ♦ Receive push notifications on orders, routes, and delivery process



Address data and routing
by Google Map



Fuel consumption control: fillings and thefts detection



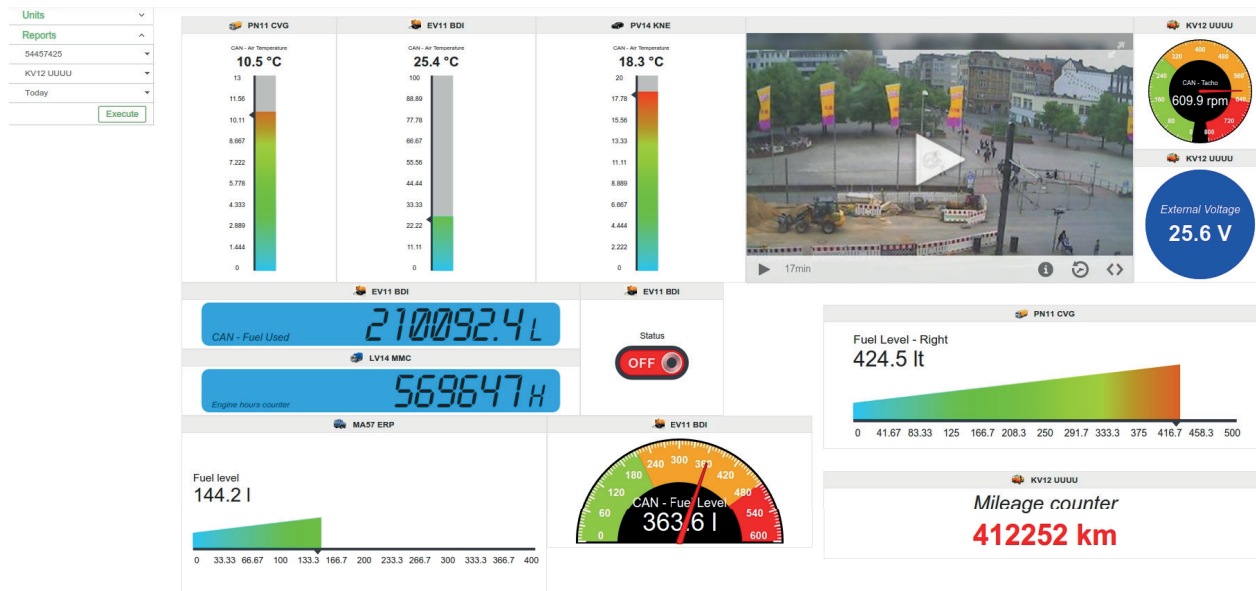
With Wialon you can detect any type of fuel misuse and control the whole cycle of fuel distribution from filling stations and dispensers to vehicles and machinery.

FLS data: analyse fuel consumption depending on a fuel level in the tank in different time points. Calculation can be performed with impulse, absolute, and instant fuel consumption sensors each providing its own benefits.

Fuel consumption by math option: use engine operation and efficiency sensors as coefficients for fuel consumption rates. It ensures maximum precise calculation depending on the season, idling, urban and suburban cycles or high load.

Proprietary fuel management system allows detecting fuel thefts in the most complicated cases, including underfillings, card frauds, insufficient driving, siphoning, and much more.

Sensolator: a convenient control panel designed to monitor sensor performance



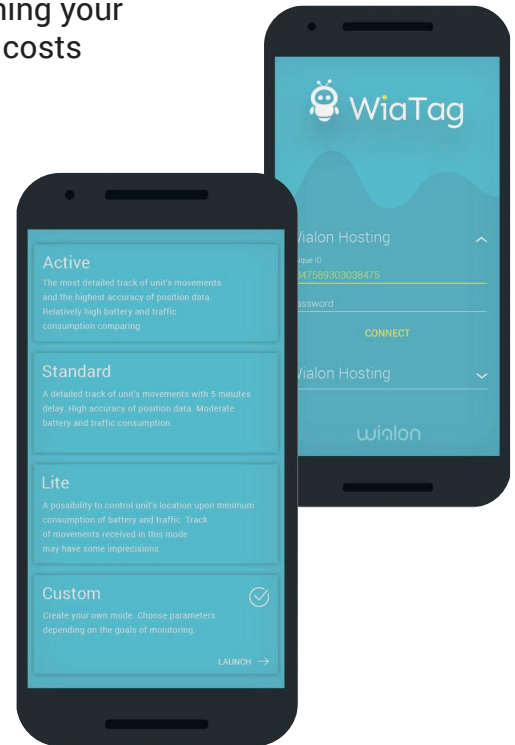
When it comes to diesel generators and other stationary assets there are dozens of parameters to control. Sensolator is used to visualize counters and sensors from one to any number of units. It is intended both for online tracking and performance analysis based on historical data.

- ♦ Fully customizable interface for real-time asset management
- ♦ Drag-and-drop feature to reorganize dashboard
- ♦ Online alarms, SMS and email notifications to respond to device failure
- ♦ Video streaming from the specified URL
- ♦ Report generation from flexible templates
- ♦ Command-sending capabilities
- ♦ Multiple ways to customize counter and sensor visualization

WiaTag: GPS tracker in your smartphone

WiaTag is an effective and easy-to-use iOS/Android app turning your device into a GPS tracker. The application relieves you from costs associated with hardware acquisition and allows to start effective personal tracking and workforce management with a single mobile device.

- ♦ Maximum precise location detection to quickly find and track personnel
- ♦ Option to follow employees outside their vehicles during field operations
- ♦ Quick sending of photos, locations, and SOS-messages
- ♦ Smart data collection mode to save battery life and traffic
- ♦ Preset and custom user modes for quick configuration
- ♦ Tracing of the latest data and sending of unit current status
- ♦ Remote configuration from Wialon interface

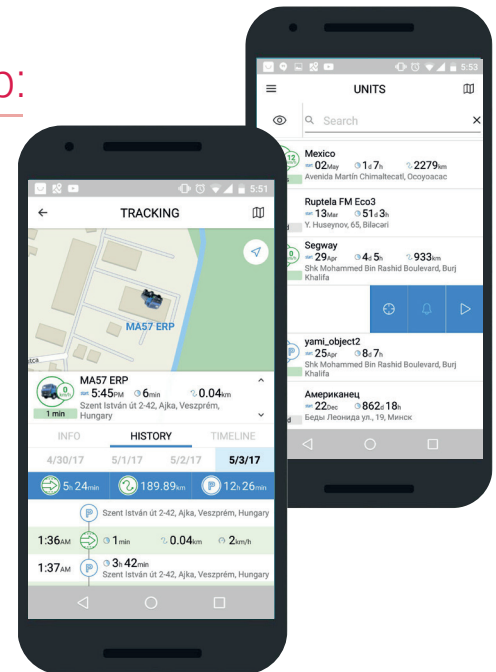


Wialon mobile application

Wialon mobile app comprises the core functionality of the system in a user-friendly mobile interface for you to continue GPS tracking outside the office. From around the world you continue getting real-time data on vehicles and stationary units with detailed track history available on each.

Advanced mobile tracking with Wialon app:

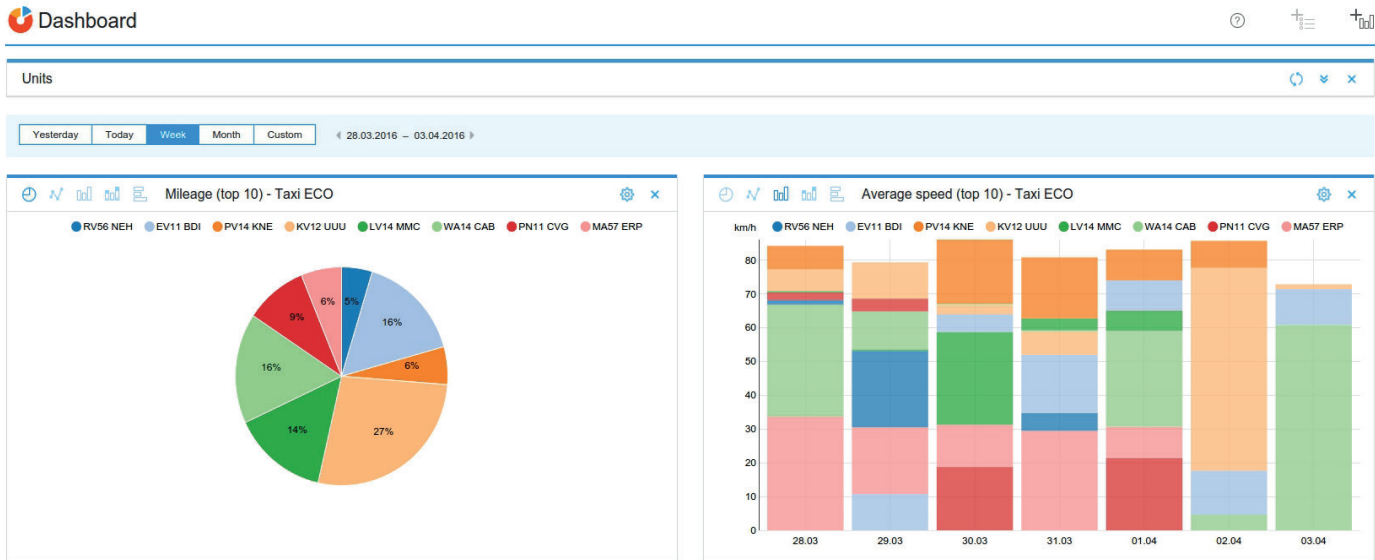
- ♦ Manage unit list to get relevant information on vehicle movements, location, ignition state, and data actuality
- ♦ Map mode to access units, geofences, tracks, and event markers on the map or detect your own location
- ♦ Tracking mode to monitor the precise location and critical parameters of a particular unit
- ♦ Timeline tool to get the extended data on events
- ♦ Event-based notifications to receive right in the app
- ♦ Locator functionality to create links and share unit locations
- ♦ Sending of core commands from “Units” and “Tracking” tabs



For advanced user experience fast switch to Dashboard app has been implemented bringing the KPIs of the fleet to your fingertips.



Dashboard: a perfect tool for data analysis and visualization



Fleet performance evaluation is based on mileage, fuel consumption, engine hours, average and maximum speed, idling, geofences, and driving time indicators.

The app allows to create any number of charts for selected parameters, carry out comparative analysis or use multicharts to show correlations between two different KPIs.

No matter how much diverse and complicated the data is, Dashboard makes it simple and perceptible even for novice users and top decision makers.

Dashboard is available as web and mobile applications.



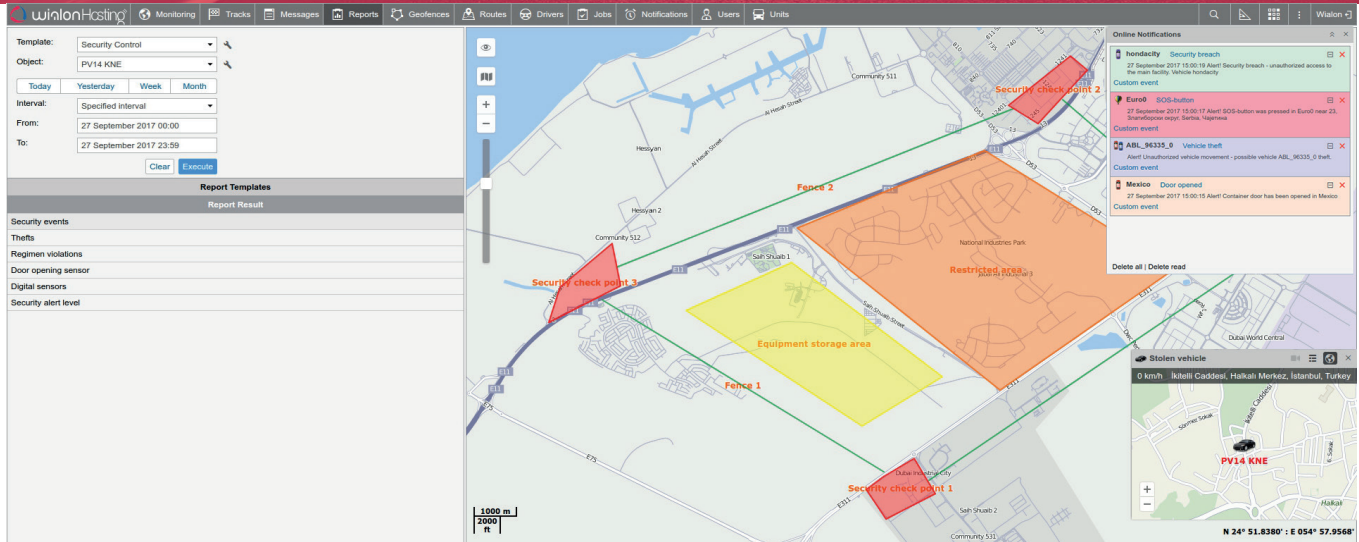
Tracks and minimaps: extended information on units and routes



Tracks: create tracks to display unit movements on the map and get quick access to unit activity data via event markers. Track Player app makes it easier to simultaneously follow several units on the map, analyze tracks and timeline events in a handy interface.

Minimaps: use minimaps to instantly access extended unit information, current location, speed, and address or follow units with Google Street View..

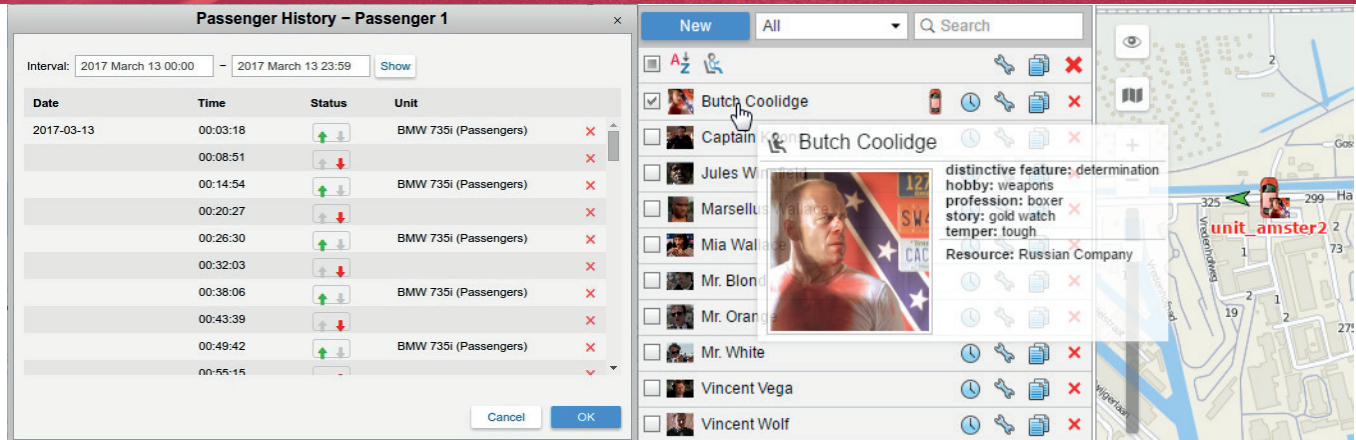
Safety and security: advanced functionality for vehicle, driver, and cargo protection



Wialon promotes cargo, vehicle, and human safety also simplifying stolen vehicle recovery. In case of vehicle theft or loss of cargo the system detects precise unit location and enables real-time tracking to the point of recovery.

- ♦ Instant event-based notifications
- ♦ Geofence control alerts
- ♦ Panic button
- ♦ RFID/NFC solutions and integration with GPS locks to restrict access
- ♦ Door opening detection to prevent cargo thefts
- ♦ Remote engine shutdown
- ♦ GPS/LBS location detection
- ♦ Control of authorized access to equipment and facilities

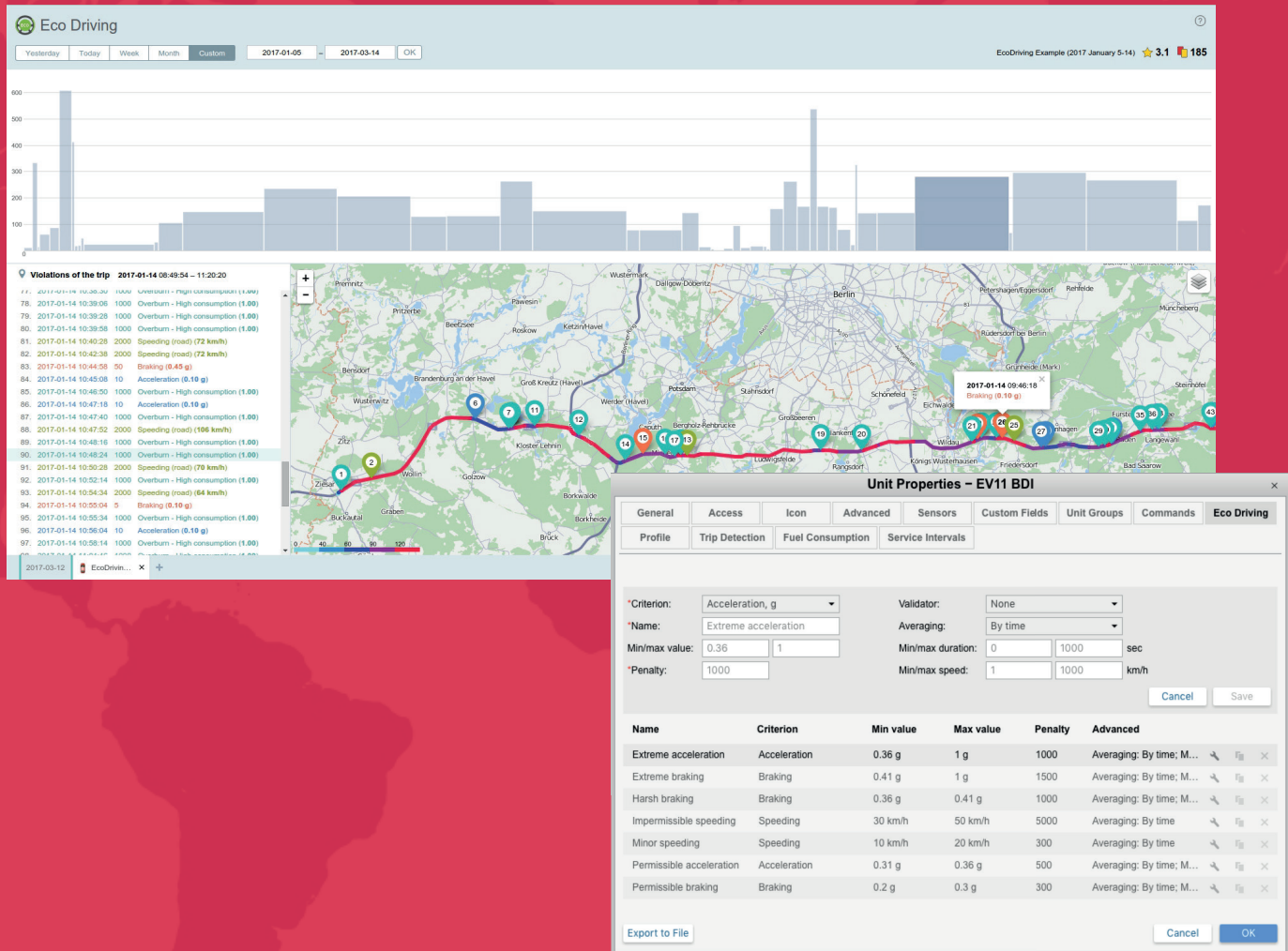
Passenger module allows for passenger count/listing based on RFID-technologies



“Passengers” module is designed to control passengers doing regular trips by special transport, e.g. school buses and corporate vehicles.

- ♦ **Passenger history**
Study historical data to make sure that the passenger has been successfully picked-up or dropped-off in the right place
- ♦ **Instant notifications**
Be informed if a passenger gets in/out or doesn't leave a vehicle within the indicated period of time
- ♦ **Online monitoring**
Track passenger location on the map.
- ♦ **Informative reports**
Receive reports on the number of passengers, pick-up/drop-off locations, trip duration, passenger movements and other parameters.

Eco Driving: improve fleet safety, reduce fuel cost and enhance cargo safety



Driver behaviour monitoring

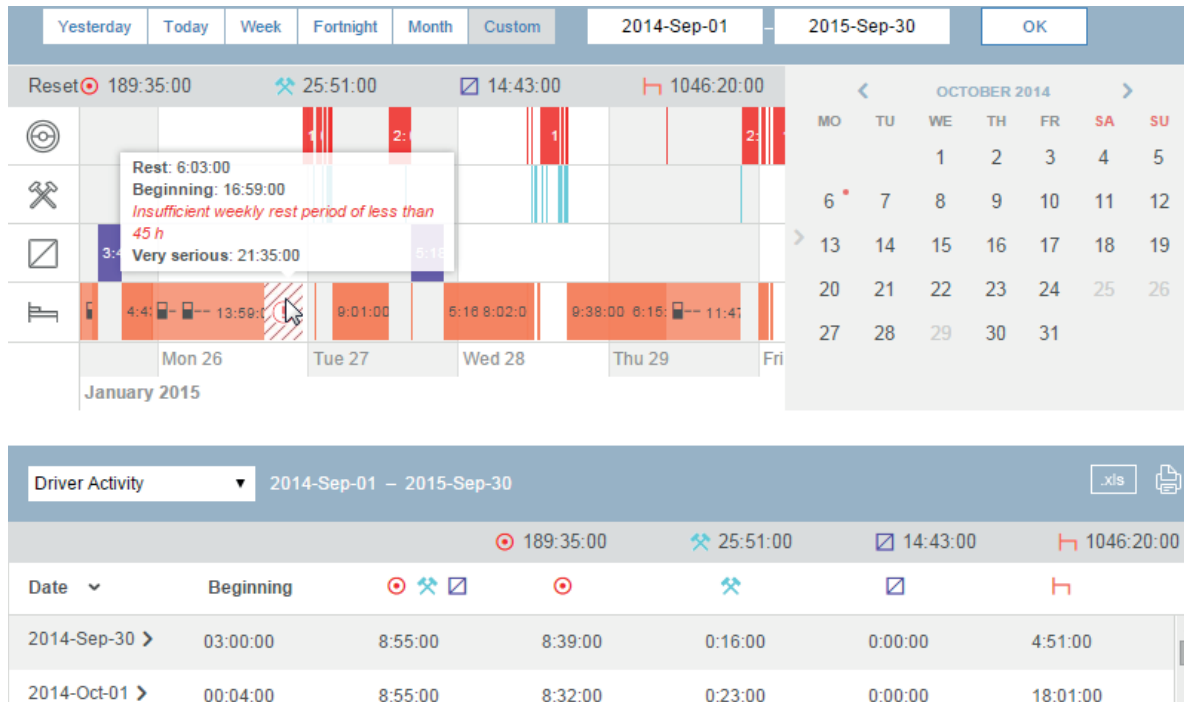
Flexible configuration allows to create customizable driving quality assessment model based on violation criteria and coefficients that can be set for each vehicle individually. Each violation adds penalty points that may be used as a basis for driver ranking. The less penalty points you get, the higher is the rank and the quality of driving.

Individual sets of criteria

- ♦ **View the detailed presentation**
of driving quality for each vehicle in a fleet in a user-friendly visual format.
You get access to the details on violations with tracks and event markers on the map reflecting the exact locations where those violations took place
- ♦ **Evaluate driving quality**
based on acceleration, breaking, cornering, turn, speeding, reckless driving, or custom criteria
- ♦ **Rank your drivers**
based on total or average penalty points scored for all trips
- ♦ **Violation criteria presets**
for cars, buses or trucks



Simpler tachograph data management with two web-based Wialon applications



Tacho Manager

- ♦ Manual or automatic (command-triggered) DDD-files uploading to Wialon server
- ♦ Long-time storage with the option for quick downloading right from the app
- ♦ Handy data visualization

Tacho View

- ♦ Driving, work, rest, availability periods based on DDD-files data
- ♦ Presets by customizable criteria
- ♦ Report building and downloading